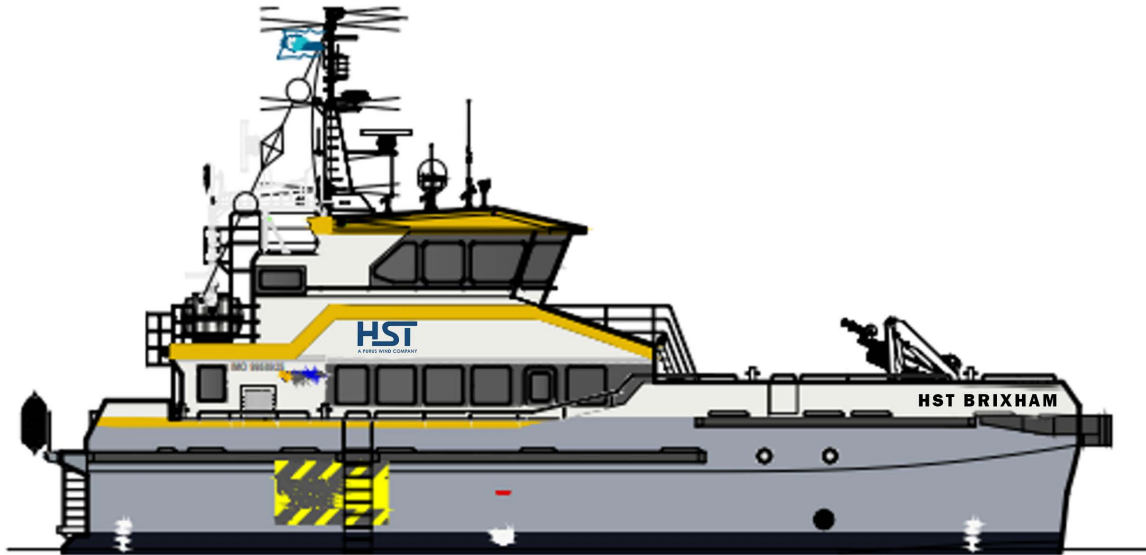


HST BRIXHAM

StratCat 26 (Conventional)

OFFSHORE WINDFAST CREW SUPPLIER



GENERAL

Construction Material	Aluminium
Superstructure Mounting	Welded to Deck
Classification	Bureau Veritas
Flag	United Kingdom

DIMENSIONS

Length overall	27.1m
Beam overall	8.9m
Hull Design Draft	1.3m
Hull Scantling Draft	1.6m
Deadweight	30T
Aft Cargo Area	31m ²
Fwd Cargo Area	81m ²
Deck Load	2T/m ²
Crew	4
(Industrial) personnel	24

TANK CAPACITIES

Marine Gas Oil	35 000 Ltrs
Fresh Water	2 900 Ltrs
Black Water	1 500 Ltrs

PROPULSION SYSTEM

Main Engines	2 x Caterpillar C32 Acert
Installed Power	2 162 kW
Gearboxes	2 x ZF 3050V
Propulsion	2 x FPP
Bollard Push	Mooring Bollards: 50kN, Towing Bollards: 140kN
Speed Sprint	26.0 kts
Speed Service	24.0 kts

ELECTRICAL EQUIPMENT

Generator sets	Cummins Onan, QD 27MDKBU
----------------	--------------------------

DECK EQUIPMENT

Anchor	1 x HHP
Anchor Winch	Hercules, model: 150
Deck Crane	PK 23500 (M)A, SWL: 2.45t @ 8m, 2700 kg @ 8.2 Reach
Bow Centre Fender	RG Seasight
Bow Shoulder Fender	RG Seasight
Pressure Washer	Hercules, 150 bar hydraulically driven c/w Hose reel with 25m hose assembly 1 piece lance assembly and stainless steel rotating nozzle.
Fuel Transfer System	A 40m reel, gun and metering device shall be provided, and stowed in starboard foredeck lockers

FIRE FIGHTING

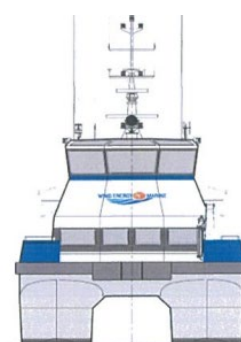
Engine Space	A Double shot FirePro or equal
Fire Pump	Survey Authority Requirements
Fire Extinguishers	1 x 5 kg CO2 one in each Engine Room; 4 x 9 Ltr Foam in line Saloon, accommodation areas; 1x 9 kg Dry Powder in the Bridge for Electrical Fires; 2 x 1.5kg Co2 in bridge for electrical fires

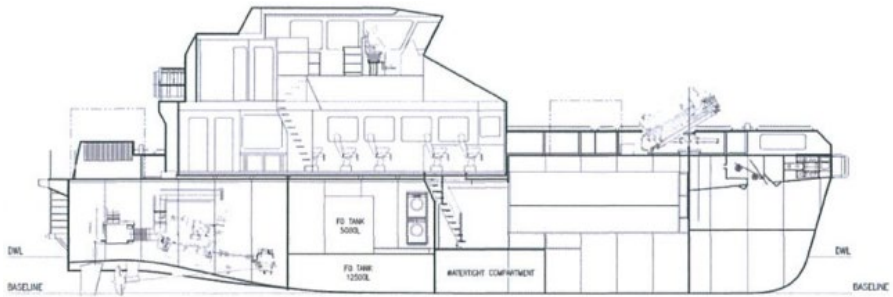
ACCOMMODATION

Cabins	4 x Hull Cabins
Saloon	Business / Comfort Class Seating
Wheelhouse	Pilot Nautic Star or equivalent suspension chairs
Air Conditioning	An air-cooled split air conditioning system

NAUTICAL AND COMMUNICATION EQUIPMENT

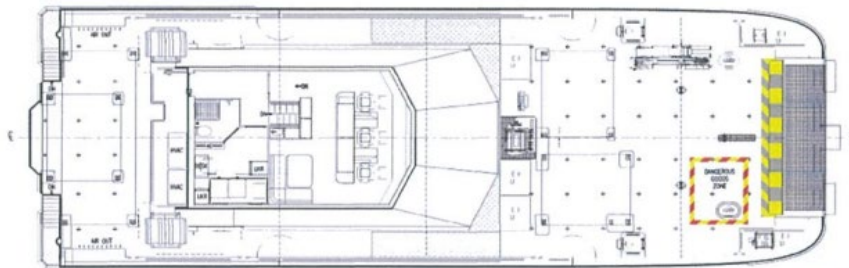
Searchlight	1 x JABSCO SEARCHLIGHT (24V) MODEL: 2555L or equal
Radar	Primary: Simrad R5024 12U/6XX-Band Radar System + 24 inch display + 12kw Upmast transfer with 6fl Antenna Standby: Simrad NSS EVO3 12-inch full HD display with GPS, sounder, wi-fi & HDMI out + 4G Broadband radar scanner Reflector: Echomax EM 230
ECDIS	Simard ECDIS E5024 with 24" LCD monitor
GPS	Simrad P3007 IMO GPS
AIS	Simrad V5035 AIS Class A Transponder
Compass	Satelite: Simrad HS80A; Magnetic: Autonatic C20
Autopilot	AP70 MK2 AutoPilot IMO Pack Analog
Echo sounder	Simrad 53009 9"
Speed log	SIMRAD SAL R1A Easy tank, Speed Log
Internal communication	Vingtor CIS or equal Public Address System, Vinpfor VSP or equal balteryless telephone system, LILIN 16 channel or equal CCTV
External communication	1 x Sailor RT6310 MF/HF Radio and 2 x Sailor RT6222 VHF Radio





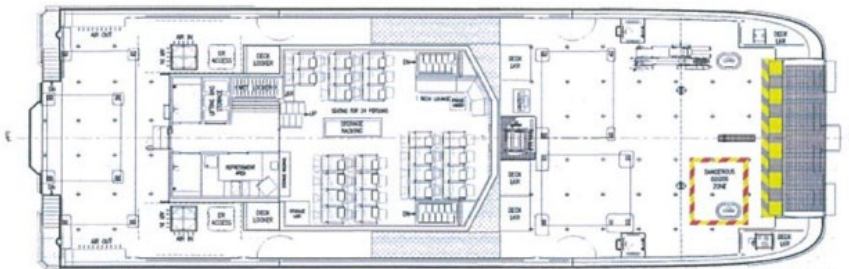
INBOARD PROFILE

FR.0	FR.1	FR.2	FR.3	FR.4	FR.5	FR.6	FR.7	FR.8	FR.9	FR.10	FR.11	FR.12	FR.13	FR.14	FR.15	FR.16	FR.17	FR.18	FR.19	FR.20	FR.21	
TRANSOM	1200	2400	3600	4800	6000	7200	8400	9600	10800	12000	13200	14400	15600	16800	18000	19200	20400	21600	22800	23500	23500	24700



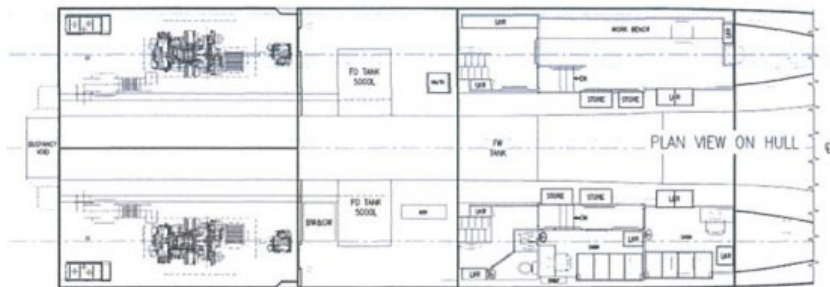
PLAN VIEW BRIDGE

FR.0	FR.1	FR.2	FR.3	FR.4	FR.5	FR.6	FR.7	FR.8	FR.9	FR.10	FR.11	FR.12	FR.13	FR.14	FR.15	FR.16	FR.17	FR.18	FR.19	FR.20	FR.21	
TRANSOM	1200	2400	3600	4800	6000	7200	8400	9600	10800	12000	13200	14400	15600	16800	18000	19200	20400	21600	22800	23500	23500	24700



PLAN VIEW ON MAIN DECK

FR.0	FR.1	FR.2	FR.3	FR.4	FR.5	FR.6	FR.7	FR.8	FR.9	FR.10	FR.11	FR.12	FR.13	FR.14	FR.15	FR.16	FR.17	FR.18	FR.19	FR.20	FR.21	
TRANSOM	1200	2400	3600	4800	6000	7200	8400	9600	10800	12000	13200	14400	15600	16800	18000	19200	20400	21600	22800	23500	23500	24700



PLAN VIEW ON HULL